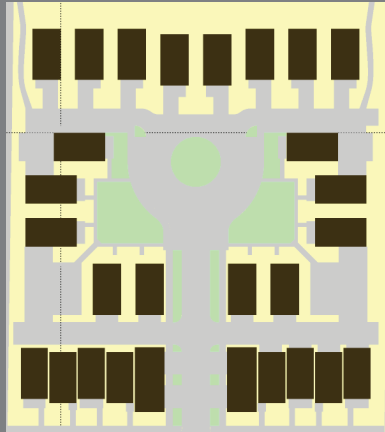


COURTYARDS ON MADISON

Bainbridge Island, Washington

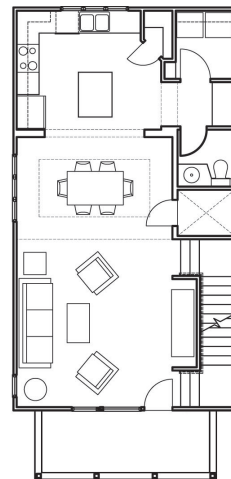


PROJECT DATA

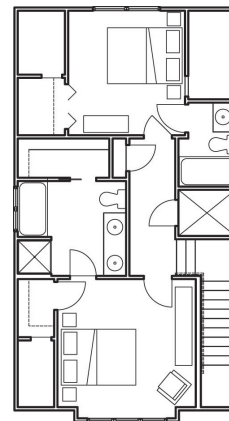
Site Area: 1.85 AC
Density (gross): 16du/ac
Program: 30 Units
Unit Types: Rowhouses
(attached/detached)
Unit Sizes: 2-3 bedroom,
800sf-1550sf
Parking: 2.25/unit

KEY FEATURES

Moderate Density
Affordable Housing (4 units)
Variety of Unit Types
Central Courtyard
Alley Parking



Second Floor Plan



Third Floor Plan



Site Plan

Our first multifamily housing project, includes 30 townhouses arranged around a central common space. Using both attached and detached townhouses, the project includes 4 affordable units which flank the entry drive.